

ClearPix Motorized Screen Installation Manual



Screen Research

Rue du Finistere

ZAC Erdre Active

44240 La Chapelle sur Erdre, France

Tel. +33 (0) 2 40 77 87 89

Fax +33 (0) 2 40 77 86 78

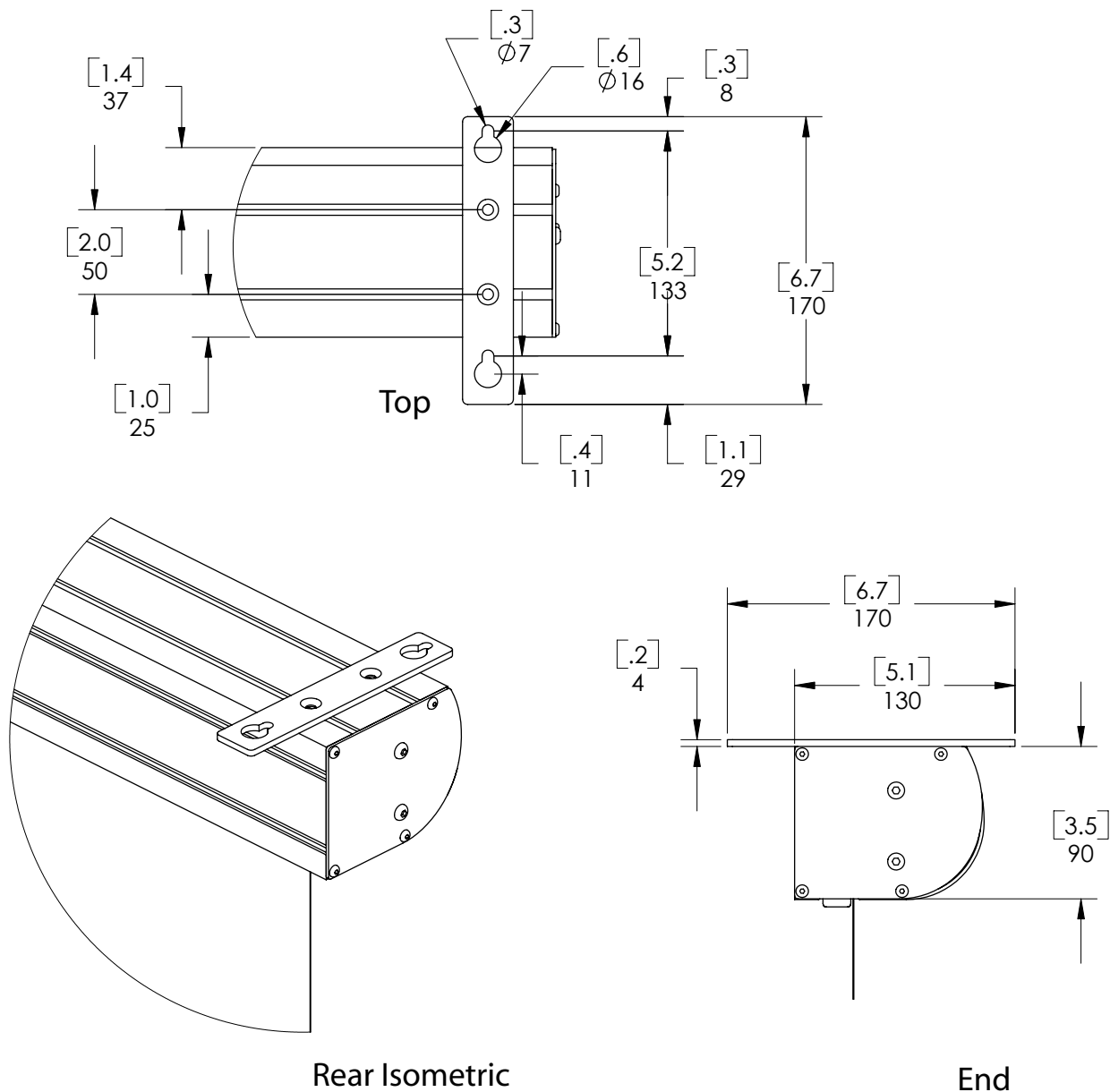
<http://www.screenresearch.com>

info@screenresearch.com

ClearPix Motorized Screen Installation Manual

Mounting Dimensions - Small Casing

Ceiling Mount - Single Layer - 70" - 96"(16/9 format) - 70"-90" (4/3 format)



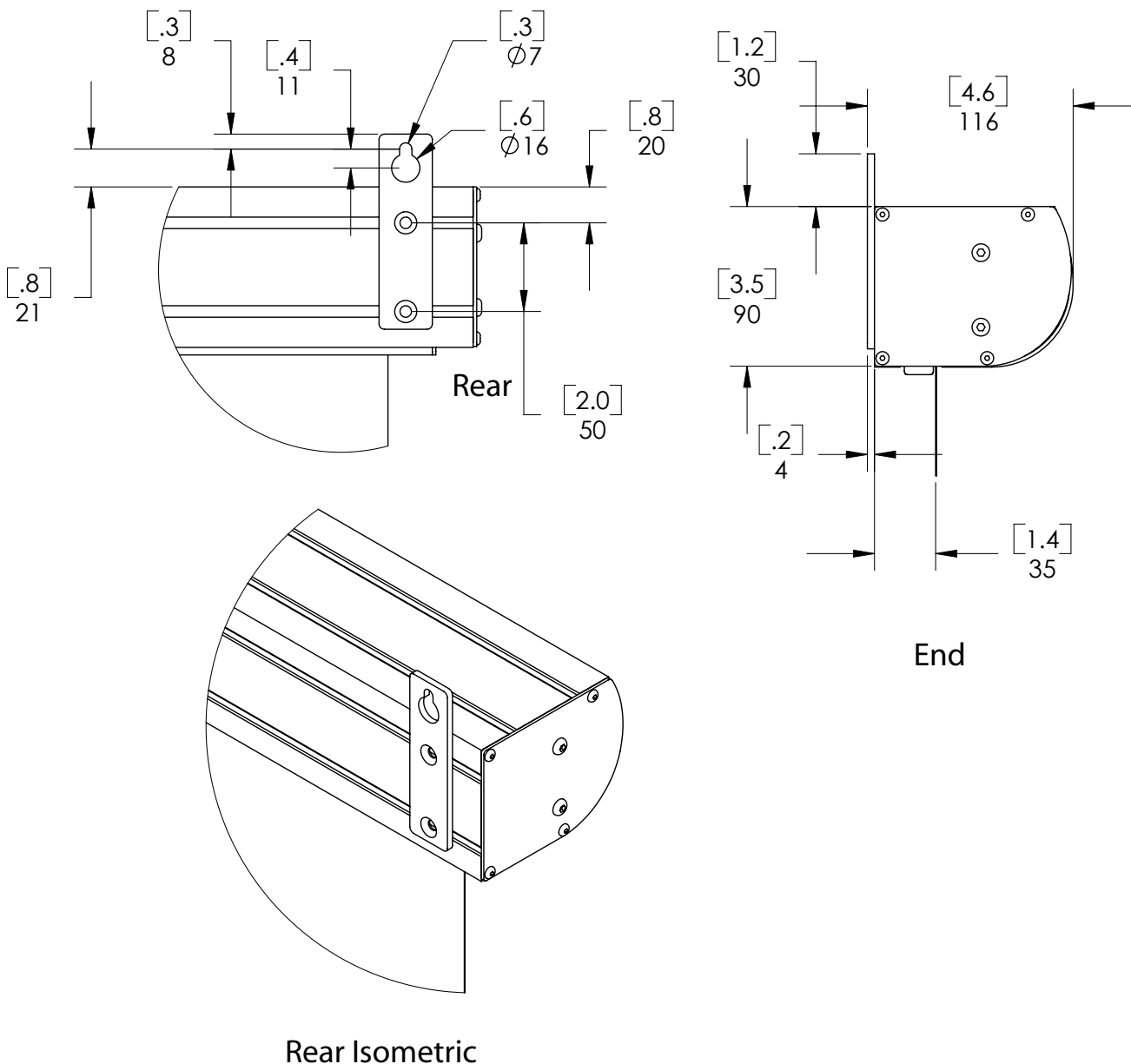
The mounting brackets are bolted to captive M6 nuts which slide in slots in the casing. These can be placed anywhere along the length of the casing, but for best results they should be as near the end of the casing as possible -- within 4" (10 cm) is best. Screens are delivered with two ceiling-mounting and two wall-mounting brackets.

There is one extra nut in each slot in case it is necessary.

ClearPix Motorized Screen Installation Manual

Mounting Dimensions - Small Casing

Wall Mount - Single Layer - 70" - 96" (16/9 format) - 70"-90" (4/3 format)



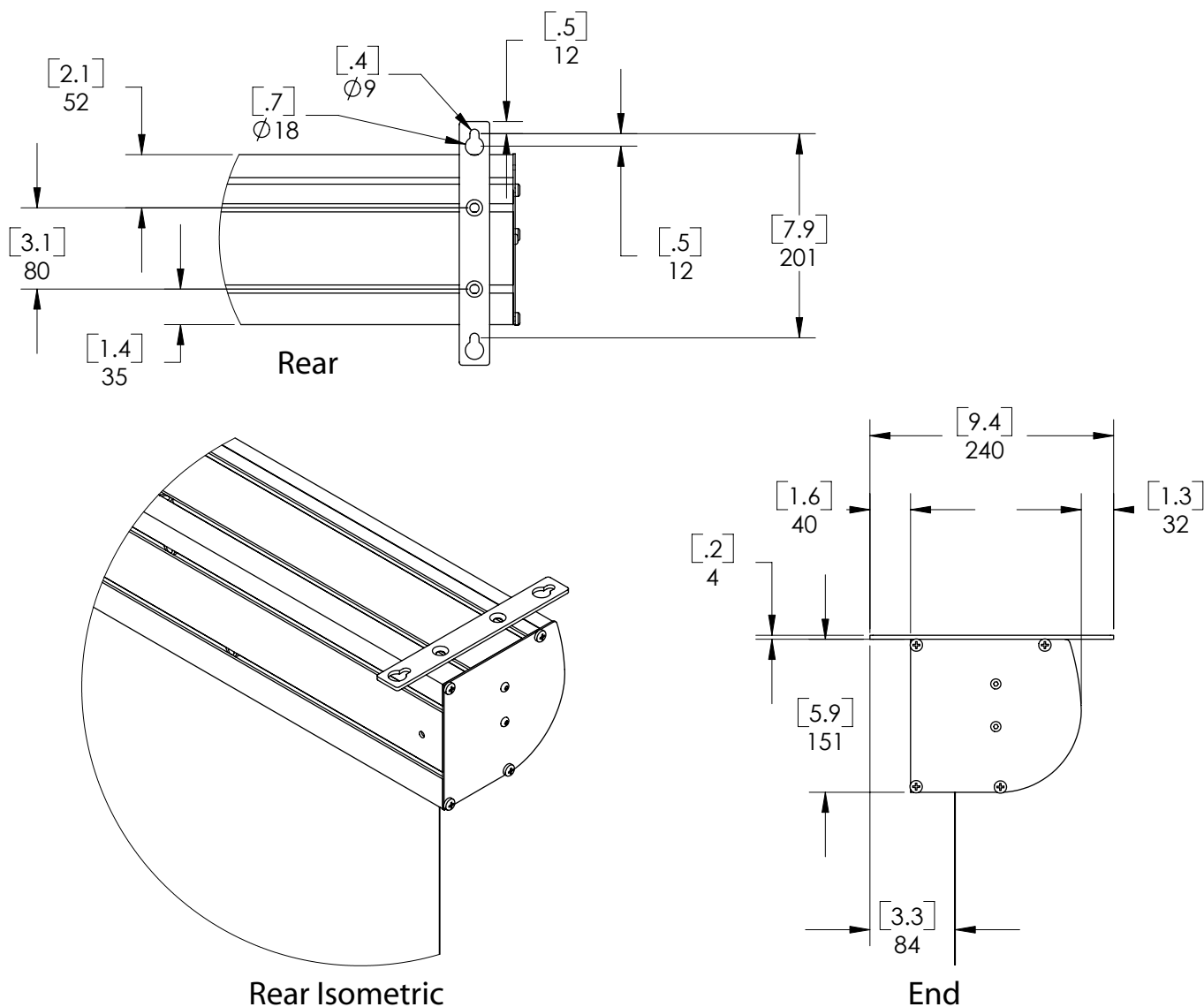
The mounting brackets are bolted to captive M6 nuts which slide in slots in the casing. These can be placed anywhere along the length of the casing, but for best results they should be as near the end of the casing as possible -- within 4" (10 cm) is best. Screens are delivered with two ceiling-mounting and two wall-mounting brackets.

There is one extra nut in each slot in case it is necessary.

ClearPix Motorized Screen Installation Manual

Mounting Dimensions - Large Casing

Ceiling Mount - Single Layer > 96" (16/9 format) and single layer > 90" (4/3 format)
Double Layer 70" - 120"



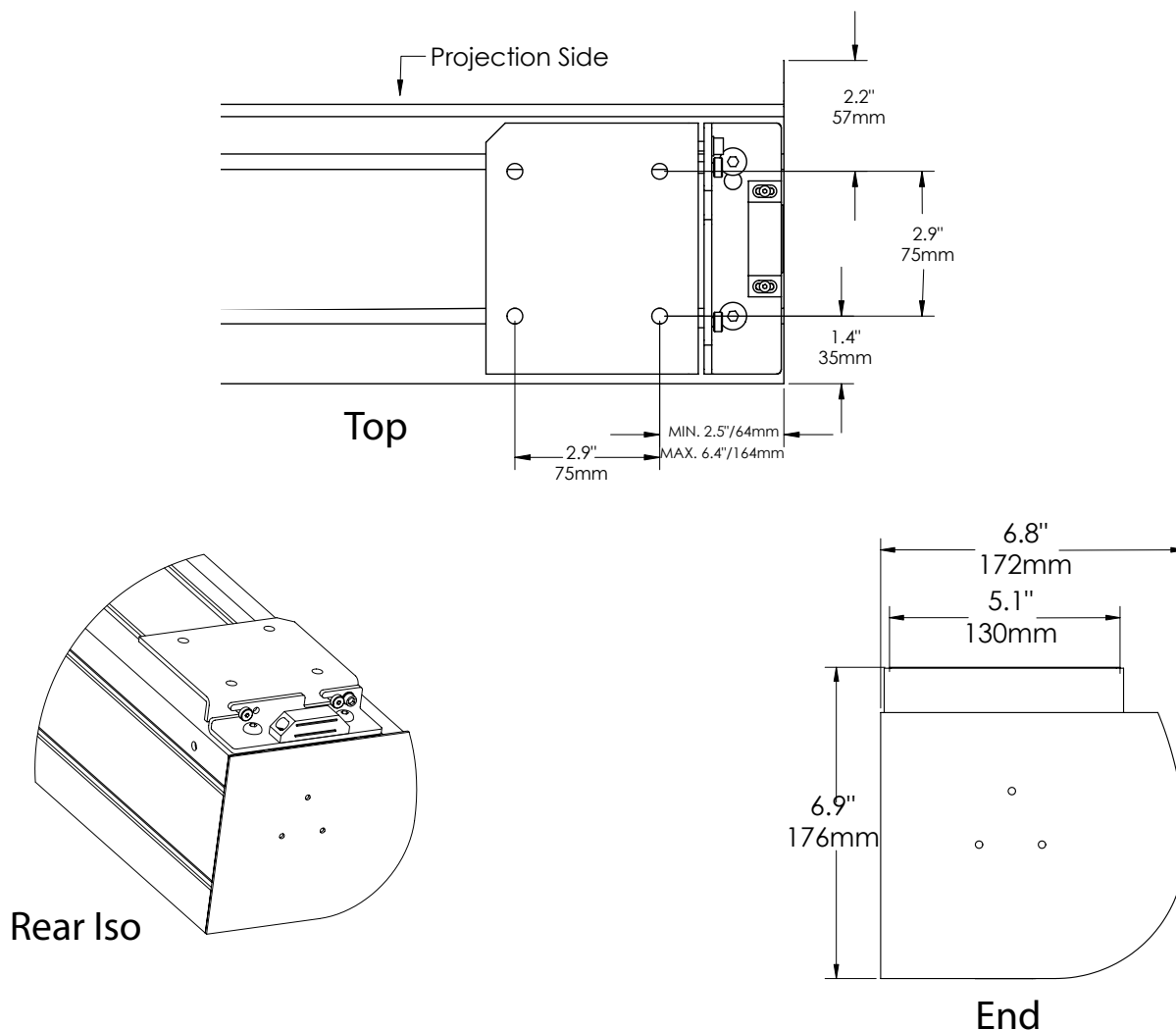
The mounting brackets are bolted to captive M8 nuts which slide in slots in the casing. These can be placed anywhere along the length of the casing, but for best results they should be as near the end of the casing as possible -- within 4" (10 cm) is best. Screens up to 120" wide (not included) are delivered with two ceiling-mounting and two wall-mounting brackets.

There is one extra nut in each slot in case it is necessary.

ClearPix Motorized Screen Installation Manual

Mounting Dimensions - Large Casing

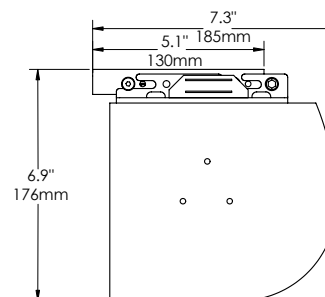
Ceiling Mount - Double Layer 120" - 160" *



The mounting brackets are bolted to captive M8 nuts which slide in slots in the casing. These can be placed anywhere along the length of the casing, but for best results they should be as near the end of the casing as possible -- within 4" (10 cm) is best. Screens over 120" wide (120" included) have a pair of quick mounting brackets.

There is one extra nut in each slot in case it is necessary.

The screen slides into the ceiling bracket from the front; this movement requires 1" / 25mm of clearance between the front of the casing and any other potential obstacle. The screen is then locked into place with a set screw.

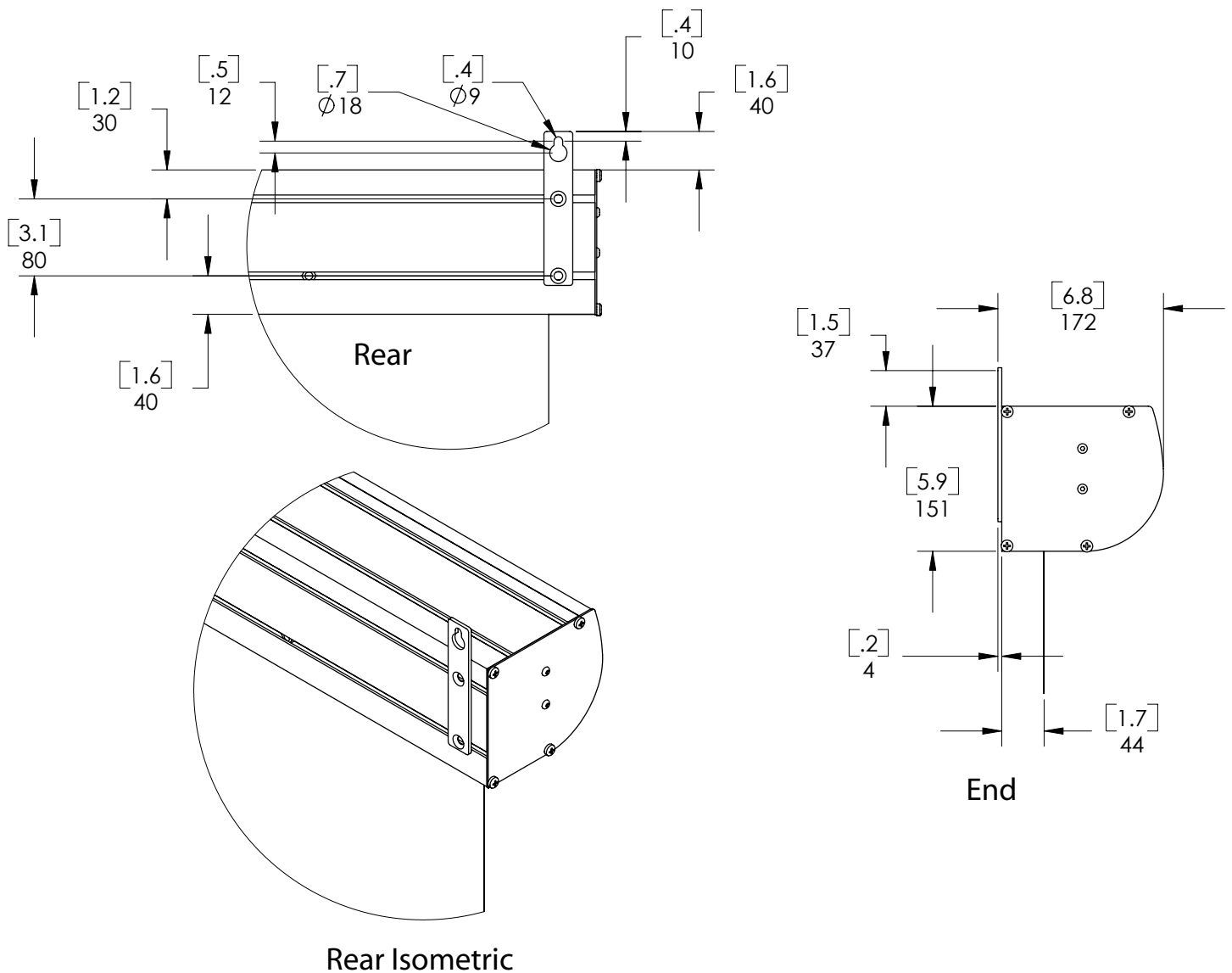


* These quick mounting brackets can be ordered **in option** to attach other motorized screens. This needs to be mentioned when ordering.

ClearPix Motorized Screen Installation Manual

Mounting Dimensions - Large Casing

Wall Mount - Single Layer > 96" (16/9 format) and single layer >90" (4/3 format)
Double Layer 70" - 120"



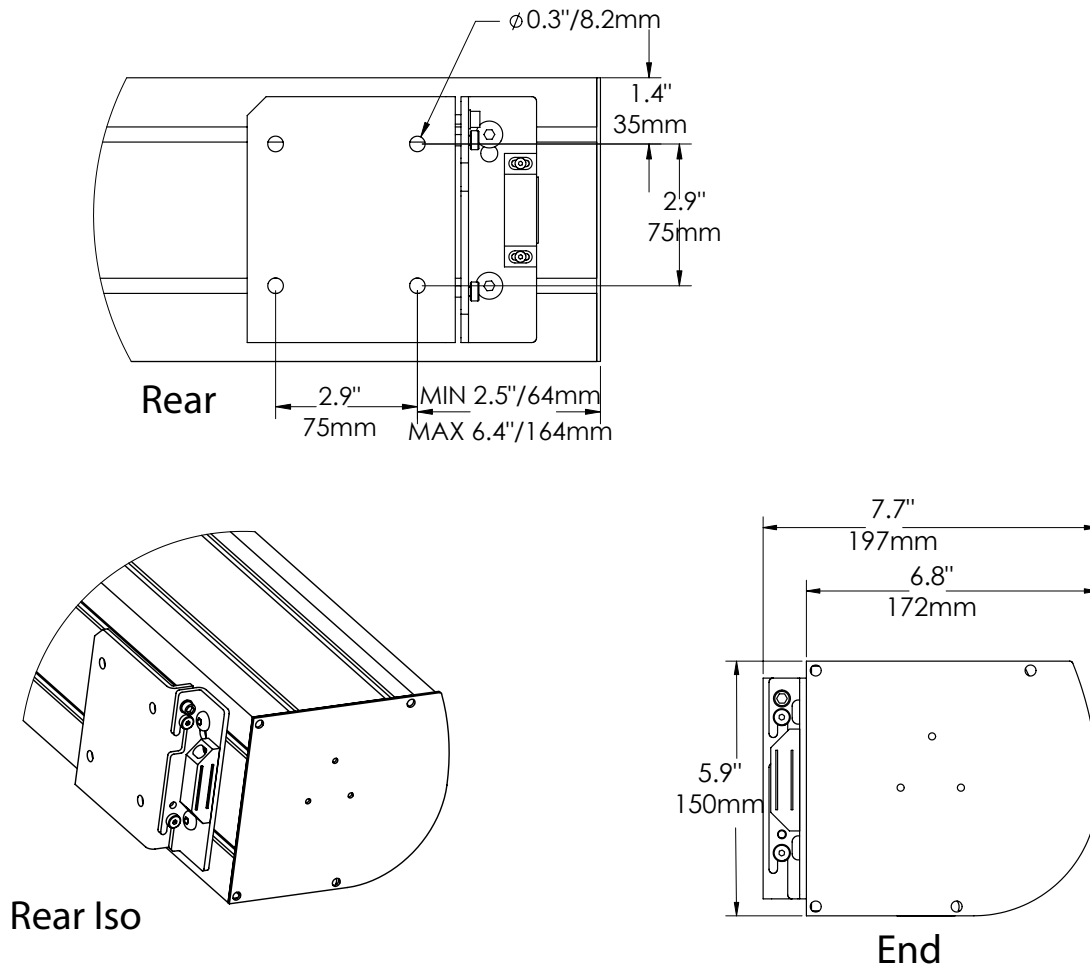
The mounting brackets are bolted to captive M8 nuts which slide in slots in the casing. These can be placed anywhere along the length of the casing, but for best results they should be as near the end of the casing as possible -- within 4" (10 cm) is best. Screens up to 120" wide (not included) are delivered with two ceiling-mounting and two wall-mounting brackets; screens over 120" wide (120" included) have a pair of quick mounting brackets.

There is one extra nut in each slot in case it is necessary.

ClearPix Motorized Screen Installation Manual

Mounting Dimensions - Large Casing

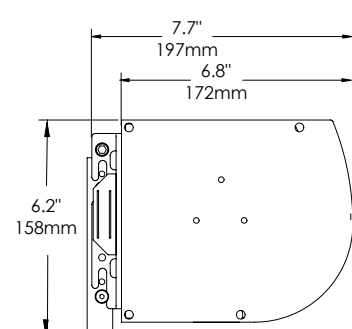
Wall Mount - Double Layer 120" - 160"*



The mounting brackets are bolted to captive M8 nuts which slide in slots in the casing. These can be placed anywhere along the length of the casing, but for best results they should be as near the end of the casing as possible -- within 4" (10 cm) is best. Screens over 120" wide (120" included) have a pair of quick mounting brackets.

There is one extra nut in each slot in case it is necessary.

The screen slides into the rear bracket from the front; this movement requires 1" / 25mm of clearance between the top of the casing and any other potential obstacle (ceiling, ...). The screen is then locked into place with a set screw.

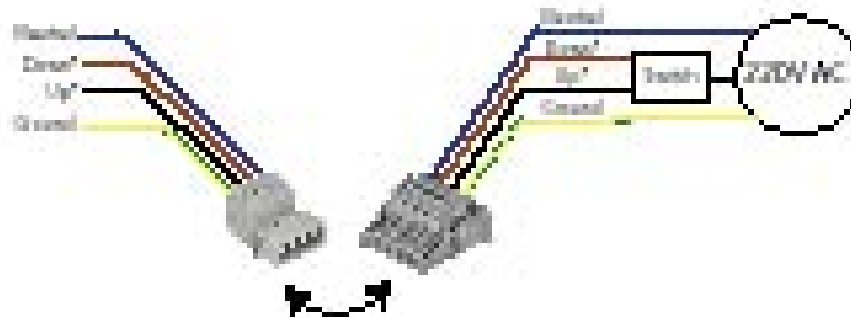


* These quick mounting brackets can be ordered **in option** to attach other motorized screens. This needs to be mentioned when ordering.

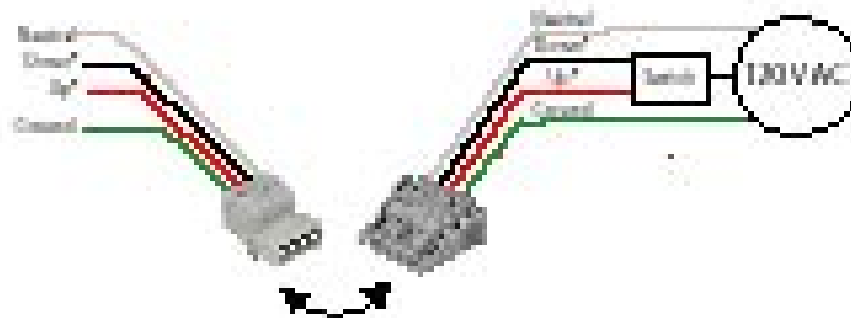
ClearPix Motorized Screen Installation Manual

Electrical Installation

220 V AC



120 V AC



* for screens which are custom-built with a "reverse" assembly, where the projection surface faces the rear of the casing, these colors are reversed.

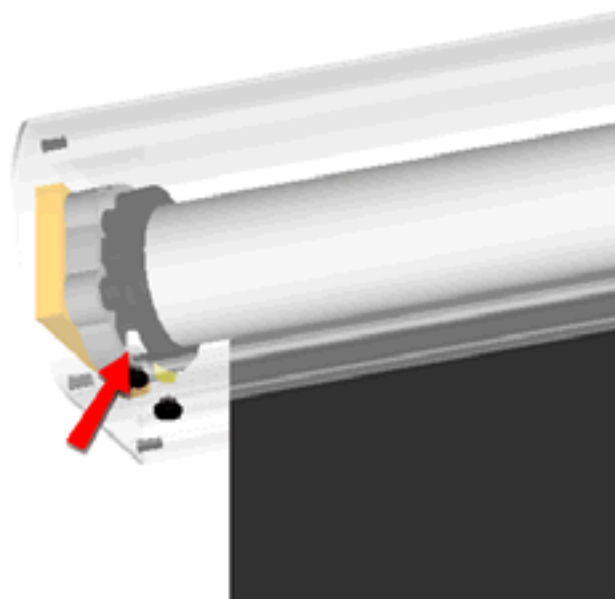
ClearPix Motorized Screen Installation Manual

End of Travel Adjustments - Manual Control

IT IS IMPORTANT THAT, UPON INSTALLATION, YOU VERIFY THE END STOPS OF THE SCREEN

The screen is equipped with switches which set the upper and lower limits of travel for the screen. These limits are very important; if the screen rolls up too far, the batten can damage the screen, and if it lowers too far it can come unglued from the tube. These limits are set at the factory, but there is a chance that they could have been released during shipping.

The limits are set by "push-push" buttons - one push engages them, and a second push releases them. There is one for the upper limit (yellow*) and one for the lower limit (white*). When a button is engaged, the motor will rotate freely in the corresponding direction to allow you to reach the desired position. Once that position is reached, you "memorize" the position by pushing the button to release it.



Lower Stop

Once the electrical installation is complete, lower the screen fully. Make sure that the screen stops before you see a white line or area above the black portion above the screen. If you see this white area, STOP THE SCREEN. Then set the lower stop somewhere above this position using the procedure described above.

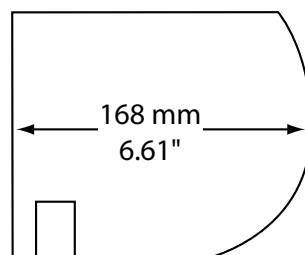


Upper Stop

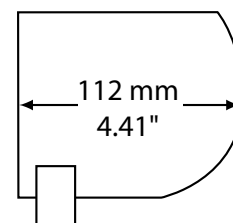
Now raise the screen fully. Make sure that the screen stops in the correct position. For large casings, the batten should fully enter the slot. For small casings, the batten should partially enter the slot. If you see that the batten is going farther than this, STOP THE SCREEN. Indeed, if the batten goes farther into the casing than the indicated limit, it will void the product warranty.

Then set the upper stop with the batten in the proper position using the procedure described above.

Upper Travel Limit Batten Positions



Large Casing



Small Casing

FAILURE TO PERFORM THIS PROCEDURE WILL VOID THE PRODUCT WARRANTY

* for screens which are custom-built with a "reverse" assembly, where the projection surface faces the rear of the casing, these colors are reversed.

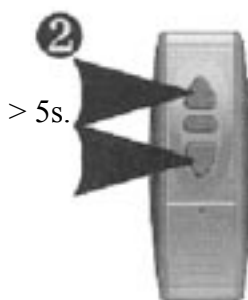
ClearPix Motorized Screen Installation Manual

ADJUSTING THE LOWER AND UPPER LIMITS OF TRAVEL FOR RF-REMOTE CONTROLLED SCREENS DELIVERED BEFORE FEBRUARY 2004.

Adjusting the lower limit of travel



Press the transmitter "Down" button until your screen reaches its lower limit of travel.



Press in the same time the transmitter "Up" and "Down" buttons for 5 seconds.
The screen quickly goes down and up. Now you can adjust the lower limit of travel with the "Up", "Stop" and "Down" buttons.



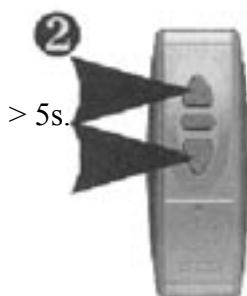
Press the transmitter "Stop" button for 2 seconds.
The screen quickly goes down and up. The process of adjusting the lower limit of travel is validated.

ClearPix Motorized Screen Installation Manual

Adjusting the upper limit of travel



Press the transmitter "Up" button until your screen reaches its upper limit of travel.



Press in the same time the transmitter "Down" and "Up" buttons for 5 seconds.
The screen quickly goes up and down. Now you can adjust the upper limit of travel with the "Up", "Stop" and "Down" buttons.



Press the transmitter "Stop" button for 2 seconds.
The screen quickly goes down and up. The process of adjusting the upper limit of travel is validated.