

How To Use TViX HD UPnP



Network movie playback by a single click

Connecting to the network is that easy thanks to making up for UPnP function. You don't put IP address any longer to connect to the network. You can play any files from UPnP on the network and even enjoy full-HD files in the shared folder without interference.

Applied models : TViX HD M-6500, TViX HD M-7000A

1. How to set up UPnP to your PC

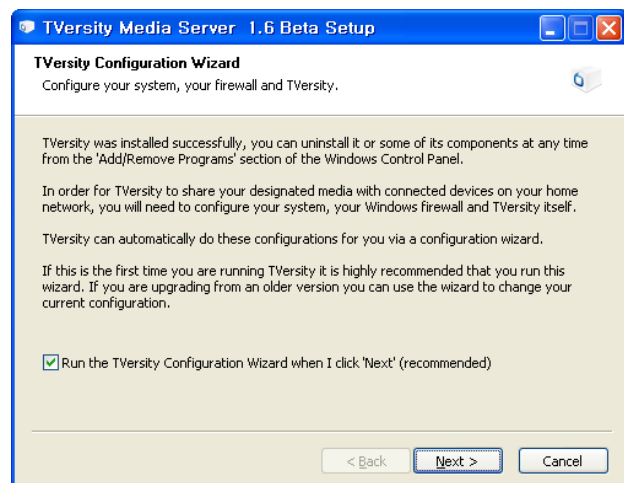
Although there are various UPnP servers for PC users, We would like to recommend you all to use TVersion or XBMC which are relatively easy to use and supports external subtitles.

- 1) Download the latest Media server version (Free edition) for Window from TVersion homepage at <http://tversion.com/download/>

- 2) Run the TVersion Configuration Wizard. When you click 'NEXT', it installs automatically. Then, additional setup is not necessary.




- 3) You may set up 'Library Folder Share' while being installed or do it later after finishing the installation.



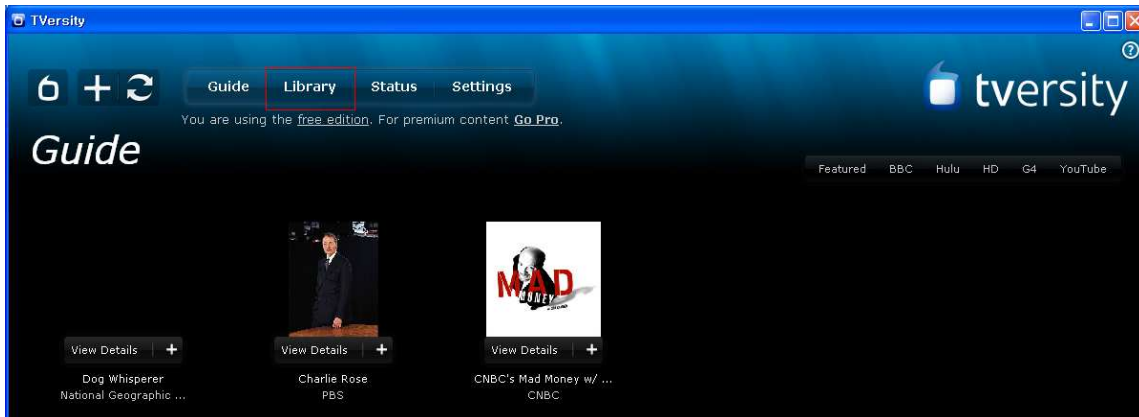
- 4) The page is for Web contents of the internet. This is not necessary to select, since TViX does not support the functions yet.

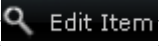


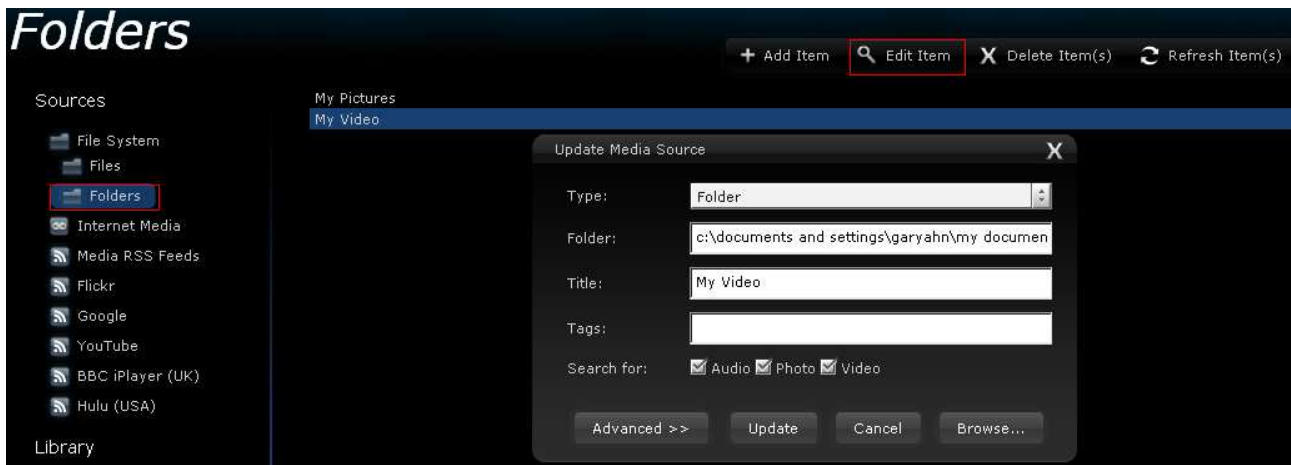
2. How to set up TVersion server

Once the installation is done, TVersion program will start automatically. If it does not, you are requested to run it by clicking TVersion icon () on Desktop.

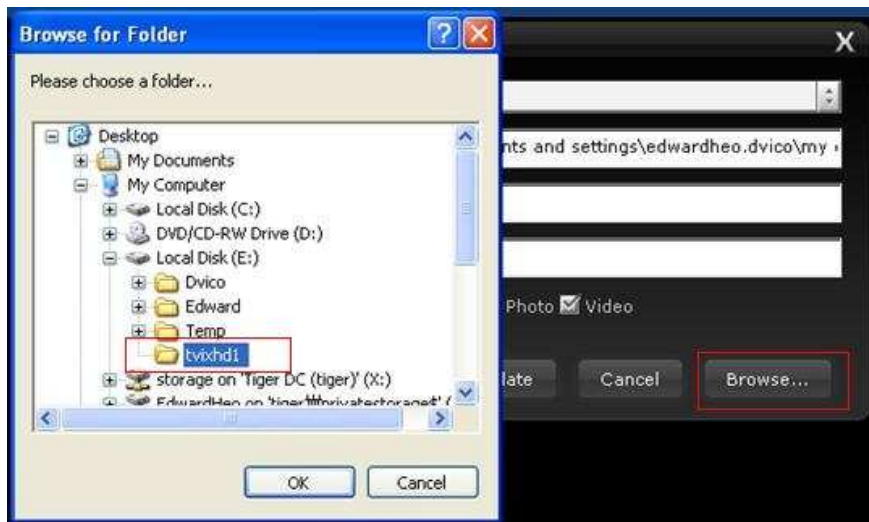
- 1) The page is the main. You may change working environment at the Settings as your taste. What you should do to use UPnP function on TViX is to set up the 'Library'.



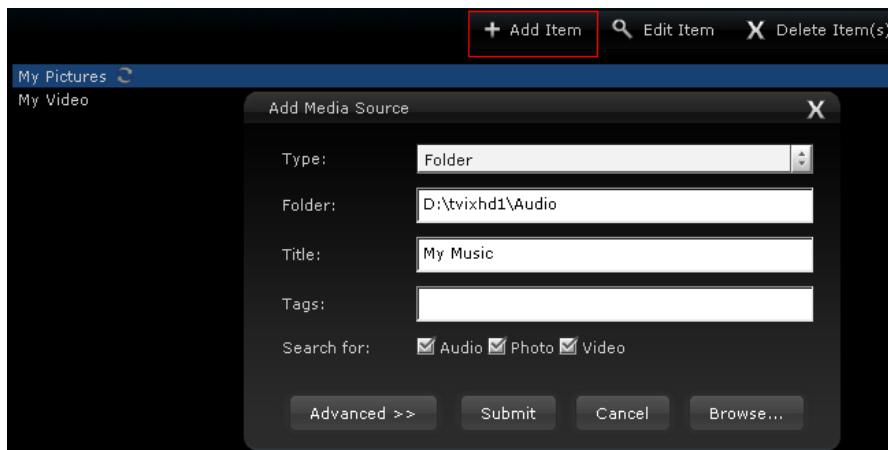
- 2) You will see 'My Video' and 'My Pictures' on the right side when you click 'Library-Folder'. After clicking 'My video', click 'Edit Item' () to find the folder that you want to share.



- 3) To the share folder, click 'Browse...' and select video folder.





- 4) In the same way, you can share 'My pictures'. If you want to add a certain folder, click 'Add item(+ Add Item)' on the top. 'Folder' link is fit by 'Browse...'. 'Title' could be changed if you want.



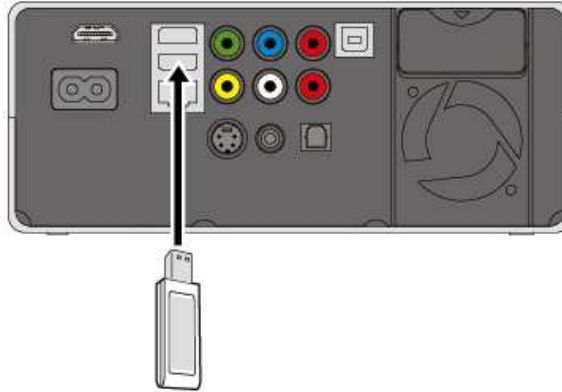
- 5) Make it sure whether the file names are right on Library-Video after the setup completion. If you see the file names right, the setup for UPnP is done.
- 6) TVersity's default setting is 'trans coding'.

◆ Special attention while using TVersity

- Some file's extensions may be shown strangely on TViX.
-  Refresh Item(s) is necessary after changing or adding a file or a folder to refresh item(s).
- To delete a media source, click  Delete Item(s) selecting the source.

3. How to set up Wireless network on TViX

1) Have your USB module attached to your TViX If you PC is connected with wire/ wireless AP router. We recommend you to use USB extension cable or cradle when you use Component or Composite cable to see video files because of not enough space for the module.



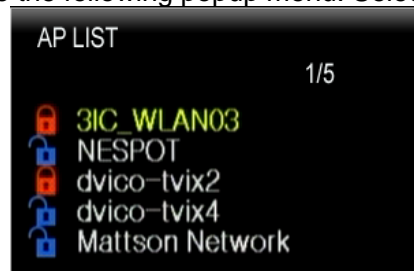
2) Please refer to the TViX homepage (www.TViX.co.kr/Eng) for a list of compatible wireless devices.

※ only one USB module is supported for the TViX, 2 models are not supported at the same time.

3) After booting, press SETUP-NETWORK- “Wi-Fi IP setting” and select DHCP or static IP. To set the Wi-Fi IP, refer to **Setting Network Configurations in TViX HD manual**.

4) After selecting DHCP, press “Search Wi-Fi Network” for searching your AP or AP router.

5) After the searching, you can see the following popup menu. Select the AP you want to connect with.

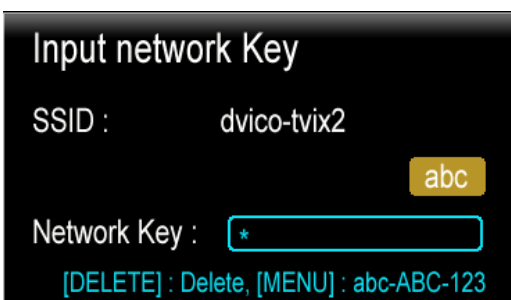


6) A red colored icon means the AP uses **WEP**(Wired Equivalent Privacy) and a blue colored icon means a non-WEP AP.

※ **You have to configure the WEP setting of the AP using the AP's instruction in advance.**

7) Insert the network key using the remote's numeric keys. As you press the MENU button, the input mode for the remote will be circulated from a lower alphabet, an upper alphabet to a numerical input mode.

☞ To delete a character, press the Capture/Delete button.



Currently supported of the WEP (Wired Equivalent Privacy) settings are the OPEN System and Shared System. Also, the WEP 64-Bit key is only supported and WPA (Wired Equivalent Privacy) and

RADIUS (Remote Authentication Dial-In User Services) server is not supported.

8) If you insert right network key, you could see well-formed TViX Wi-Fi Network Info like following one.

```
TViX Wi-Fi Network Info
SSID : dvico-tvix2
TViX IP : 172.028.1.70
Subnet mask : 255.255.0.0
DNS Server : 172.28.0.1
MAC : 00:01:04:80:08:D9
```


9) If the network key is wrong or the AP doesn't work with DHCP setting, you would see SSID and MAC only, and TViX IP and Subnet mask may not appear.

*Wireless setting may be not possible right after connecting dongle In SETUP mode. Please go out of the SETUP, and set up the wireless on SETUP-NETWORK again.

4. How to use UPnP on TViX

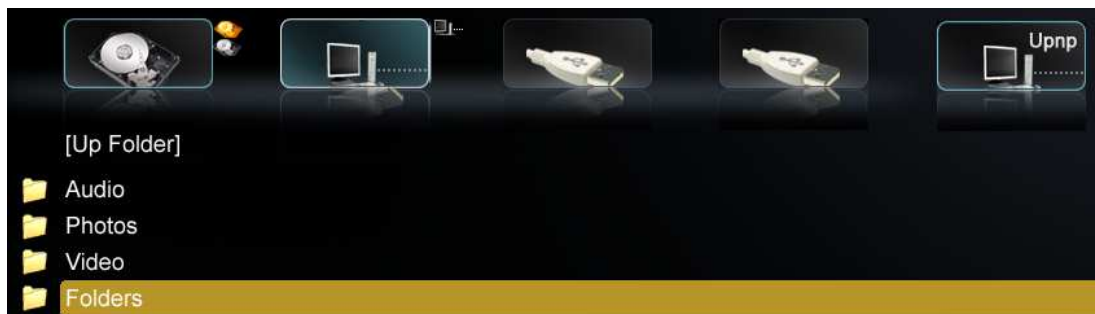
1) Select 'VIDEO' mode on the main at the main page



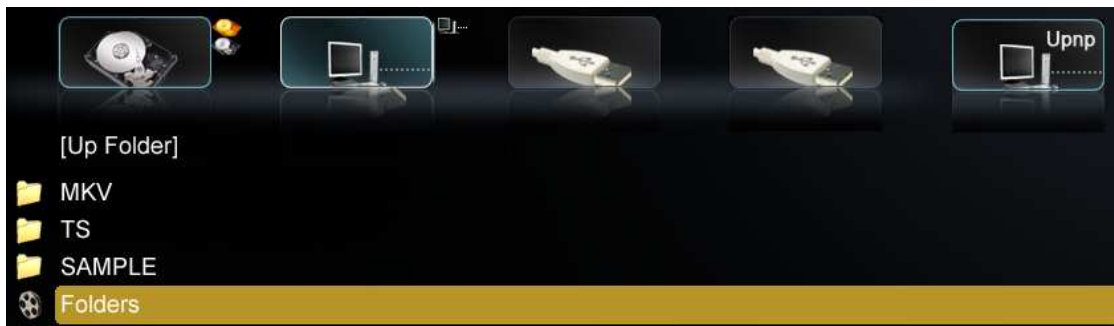
2) Press 'Left' button and then 'Right' button of the remote, then it moves to () device. To see UPnP device, press 'OK' button on the remote.



3) If you select one of them, you can see the contents that you set up on TVersity server. If you select 'Folders', you can see medial files that are in the PC or network device.



4) If you select a file that you want to play, it will be played like you do with the HDD inside.



** Some file's extensions may be shown strangely or not shown by network servers.