

Cat's Eye USB 3560 HDTV Tuner

Installation Guide – Version 4.1
For Windows XP Media Center Edition 2005



VBox Communications Ltd.

www.vboxcomm.com

Copyright © 2005, VBox Communications Ltd. All rights reserved. No part of this publication may be reproduced, stored in a retrieval system, or transmitted in any form or by any means, electronic, mechanical, photocopying, recording or otherwise, without the prior written consent of VBox Communications Ltd.

VBox and the VBox logo are trademarks of VBox Communications Ltd., which may be registered in some jurisdictions. Microsoft, Windows, the Windows logo, Windows XP, Windows Media, and DirectX are registered trademarks of Microsoft Corporation in the U.S. and other countries and are used under license. All other trademarks are property of their respective owners.

The material in this document is for information only and is subject to change without notice. While reasonable efforts have been made in the preparation of this document to assure its accuracy, VBox Communications Ltd. assumes no liability resulting from errors or omissions in this document, or from the use of the information contained herein. VBox Communications Ltd. reserves the right to make changes in the product design without reservation and without notification to its users.

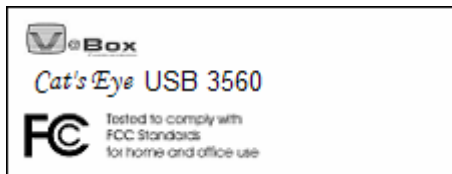
Federal Communications Commission Radio Frequency Interference Statement

WARNING: Changes or modifications to this unit not expressly approved by the party responsible for compliance could void the user's authority to operate the equipment.

This equipment has been tested and found to comply with the limits for a Class B digital device, pursuant to Part 15 of the FCC rules. These limits are designed to provide reasonable protection against harmful interference in a residential installation. This equipment generates, uses, and can radiate radio frequency energy, and if not installed and used in accordance with the instruction manual, may cause harmful interference to radio communications. However, there is no guarantee that interference will not occur in a particular installation. If this equipment does cause interference to radio or television equipment reception, which can be determined by turning the equipment off and on, the user is encouraged to try to correct the interference by one or more of the following measures:

- Reorient or relocate the receiving antenna.
- Increase the separation between equipment and receiver.
- Connect the equipment to an outlet on a circuit different from that to which the receiver is connected.
- Consult the dealer or an experienced radio/television technician for help.
- Use a shielded and properly grounded I/O cable and power cable to ensure compliance of this unit to the specified limits of the rules.

This device complies with part 15 of the FCC rules. Operation is subject to the following two conditions: (1) this device may not cause harmful interference and (2) this device must accept any interference received, including interference that may cause undesired operation.



Canadian Compliance Statement

This Class B digital apparatus meets all requirements of the Canadian ICES-003.

Cet appareil numérique de la classe B est conforme à la norme NMB-003 du Canada.

Introduction

VBox Communications is proud to introduce to you the *Cat's Eye* USB 3560 HDTV Tuner. This is a Plug & Play device with USB 2.0 interface that enables reception of data and video ATSC terrestrial broadcasts into your PC. The unit's unique and compact design ensures its operation even in small spaces, while providing an aesthetic appearance that modernizes your whole computer environment. The *Cat's Eye* USB 3560 offers you a whole new world of possibilities for clear reception into your own PC of HDTV, Internet, and data and video ATSC Terrestrial broadcasts.

The *Cat's Eye* USB 3560 Tuner, when operating under Windows XP Media Center Edition 2005, allow you to watch HDTV broadcasts in your computer, benefit from program listings, and much more.

This Installation Guide leads you through the installation of *Cat's Eye* USB 3560 HDTV Tuner and its drivers, and the configuration of the Windows XP MCE system to work with this device. It comprises the following information:

- Section 1, *Overview* – Offers a brief description of the *Cat's Eye* USB 3560 HDTV Tuner
- Section 2, *Installation Checklist* – Reviews the contents of the *Cat's Eye* USB 3560 package as well as other software and hardware requirements for installation and operation under Windows XP MCE.
- Section 3, *Connecting the Hardware* - Guides you through the steps for connecting the unit to your computer.
- Section 4, *Installing the Hardware Drivers* – Offers step-by-step instructions for installing the tuner's drivers.
- Section 5, *Installing the Microsoft Rollup 1 Update Package* – Guides you through the installation of a critical and necessary update for handling ATSC broadcasts in Windows XP MCE.
- Section 6, *Configuring Windows XP MCE to Work with VBox's USB HDTV Tuner* – Instructs you on the required setup process for HDTV reception in Windows XP MCE using the *Cat's Eye* USB 3560 Tuner.
- Section 7, *Troubleshooting* – Refers to common possible problems during installation and operation of the unit and to their solution.
- Section 8, *Contact Information* – Provides useful contact information regarding sales and support.

We recommend that you read this manual carefully to ensure proper installation and operation of the tuner and to enjoy to the utmost the new capabilities it adds to your PC.

Table of Contents

Introduction	i
1. Overview	1
1.1 System Description	2
1.2 Front Panel	3
1.3 Rear Panel	4
2. Installation Checklist	5
2.1 <i>Cat's Eye</i> USB 3560 Kit Checklist.....	5
2.2 Minimum System Requirements	5
2.3 Additional Requirements.....	5
3. Connecting the Hardware	7
4. Installing the Hardware Drivers	9
5. Installing the Microsoft Rollup 1 Update Package	15
6. Configuring Windows XP MCE to Work with VBox's USB HDTV Tuner	17
7. Troubleshooting	20
7.1 Basic Troubleshooting	20
7.2 Advanced Troubleshooting	22
8. Contact Information	24
8.1 VBox Communications USA	24
8.2 Microsoft Corporation.....	24

1. Overview

The *Cat's Eye* USB 3560 is an ATSC Terrestrial HDTV tuner for reception of ATSC video, audio, and IP data. It is capable of receiving information at the full data rate of an ATSC channel and up to 19.28 Mbps. The desired data streams are captured and forwarded to the PC through the USB 2.0 port at data rates of up to 480 Mbps. Conforming to ATSC standards, the *Cat's Eye* USB 3560 provides the flexibility and performance needed for Internet and data broadcasting applications.

The *Cat's Eye* USB 3560 combines easy PC connectivity (through a USB cable) with support for ATSC audio, video, and data broadcasting. In addition, it is designed to allow interoperability across numerous open-network DVB-based system architectures. These characteristics, together with the unit's compact design, ensure its optimal integration into the user's workspace and enhanced performance.

VBox's *Cat's Eye* USB 3560 Tuner, when operating with Microsoft's Windows XP Media Center Edition, allow users to watch and record ATSC broadcasts of High Definition Digital Television via a personal computer. The Windows XP Media Center Edition application is already pre-installed on Media Center PCs. It provides advanced computing capabilities and also easy-to-use integrated digital entertainment options that include live and recorded television, movies, and radio broadcasts, as well as music and photo files. This system gathers all your digital media in one single place and makes it accessible on either a PC monitor or television display using a single remote control.

This document contains instructions and information relevant to the installation and configuration of *Cat's Eye* USB 3560 HDTV Tuner under the Windows XP Media Center Edition (MCE) 2005 platform. The screens presented here are for illustration purposes only.

For additional installation instructions and recommendations regarding Windows XP Media Center Edition 2005 with HDTV, read the "Read me for Update 1 for Windows XP Media Center Edition 2005 with HDTV" at the Microsoft Beta Website.

1.1 System Description



Picture 1: *Cat's Eye* USB 3560 - Side View

The *Cat's Eye* USB 3560 HDTV Tuner, shown in Picture 1 above, has an innovative design that ensures easy and comfortable use while modernizing the appearance of your computer environment. It includes an interlocking stand that allows it to remain upright or lie down on a flat surface. The unit's external connectors are located on its rear panel, and its LED indicators show in the front panel. Detailed explanations of both follow below.

1.2 Front Panel



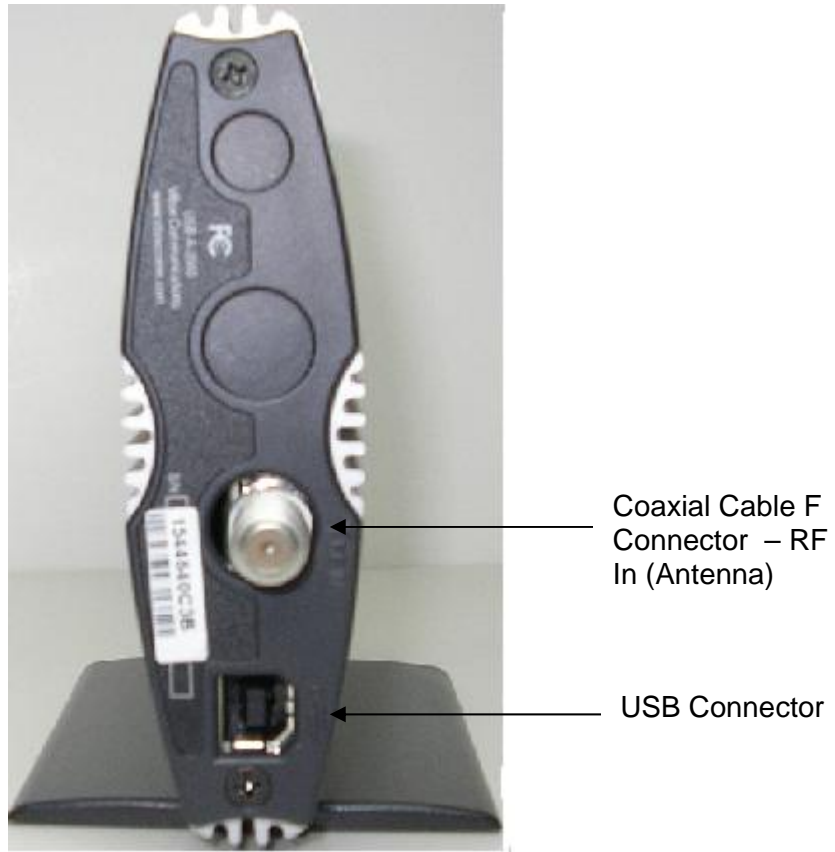
Picture 2: *Cat's Eye* USB 3560 - Front Panel

The LED panel of the *Cat's Eye* USB 3560 is located in the unit's front, as shown in Picture 2. Table 1 below provides a brief description of the LED activity and its significance. Refer to it while installing the device and initializing its operation, as explained in the following sections.

Table 1. LED Description

Description	Yellow LED (Power)	Green LED (Signal Lock)
The computer is on; the <i>Cat's Eye</i> USB 3560 device is connected to the computer	On	Off
The <i>Cat's Eye</i> USB 3560 firmware waits for first contact from host	On	Blinking
The <i>Cat's Eye</i> USB 3560 firmware starts operating but the signal is still not locked	On	Off
The <i>Cat's Eye</i> USB 3560 driver is loaded, the signal is locked	On	On

1.3 Rear Panel



Picture 3: *Cat's Eye* USB 3560 - Rear Panel

Picture 3 shows the rear panel configuration of the *Cat's Eye* USB 3560 unit. This panel includes connectors to the antenna feed (RF-In) and to the USB 2.0 port

For instructions on connecting the unit to your computer, refer to Section 3, *Connecting the Hardware*.

2. Installation Checklist

2.1 *Cat's Eye* USB 3560 Kit Checklist

The following items are included in the *Cat's Eye* USB 3560 kit. Make sure they are readily available to you at the time of installation.

- *Cat's Eye* USB 3560 HDTV Tuner + stand
- USB-2 cable to connect the unit to the computer
- Installation CD-ROM (including BDA drivers for the hardware and this Installation Guide)
- Quick Installation Guide

2.2 Minimum System Requirements

The Windows XP MCE platform is available only on computers specially designed to comply with its strict hardware requirements. Installation of VBox's *Cat's Eye* USB 3560 HDTV Tuner requires that the MCE computer be set with digital adapter capabilities. The list below details the main elements required for the operation of the *Cat's Eye* USB 3560 HDTV Tuner under Windows XP MCE:

- PC equipped for MCE, as per Microsoft's specifications and recommendations for HDTV reception (including graphics card, CD-ROM drive and Internet access, enabled)
- Windows XP Media Center Edition 2005 operating system
- MPEG-2 decoder software with HD support, installed and enabled
- NTSC tuner card (preferably with hardware for MPEG2 encoding), installed and enabled
- AC3 audio decoder, installed and enabled
- Free USB 2.0 High Speed port, enabled

2.3 Additional Requirements

- VHF/UHF external antenna (installed and enabled) supporting over-the-air local HDTV signals, with coaxial cable ending in F connector.
Remark: There are several types of antennae capable of High Definition reception. You should take into consideration the distance between your location and the broadcast source, the direction of the broadcasts, and the terrain between

you and the source. Please note also that pairing certain external antennas with a signal amplifier may increase the number of over-the-air local HDTV channels received. Check with the antenna manufacturer for recommendations in this respect.

The Internet offers several sites in which you can check for the most suitable types of antennae for HDTV reception according to your location, such as:


www.checkhd.com/buyersguide/antennas/installationguide.aspx (for PCs located within US territory).

For Surround Sound:


- A/V receiver with digital audio input capability
- 5.1 surround sound speakers


3. Connecting the Hardware


Follow the instructions below to connect the *Cat's Eye* USB 3560 HDTV Tuner unit to your computer. For your safety, we recommend that you read them carefully and thoroughly before connecting the unit. If you do not feel comfortable with the process detailed below, we recommend you consult a qualified computer technician.


	Note: VBox Communications, Ltd. assumes no liability for any damage caused directly or indirectly due to improper installation or use of the unit or any of its components.
-----------------------------------------------------------------------------------	------------------------------------------------------------------------------------------------------------------------------------------------------------------------------------

Please pay special attention to the following recommended precautions:

	Caution: Make sure to discharge any static charge that may have accumulated in your body before undertaking a hardware-related operation. You can do so by touching any metal-grounded surface.
-----------------------------------------------------------------------------------	--------------------------------------------------------------------------------------------------------------------------------------------------------------------------------------------------------

	Caution: To avoid the risk of electric shock and fire, make sure that your computer is always grounded when connected to a power source.
------------------------------------------------------------------------------------	-------------------------------------------------------------------------------------------------------------------------------------------------

	Caution: To protect yourself and your computer against voltage surges and built-up static charges originating in the antenna or the cable system, make sure that both are properly grounded at all times. Also, make sure that the antenna is installed in an open space, far from power lines or other light and power circuits.
-------------------------------------------------------------------------------------	------------------------------------------------------------------------------------------------------------------------------------------------------------------------------------------------------------------------------------------------------------------------------------------------------------------------------------------

	Caution: Handle the <i>Cat's Eye</i> USB 3560 HDTV Tuner and the PC carefully in order to avoid injury. Avoid damaging wires or using damaged wires to prevent a short circuit.
-------------------------------------------------------------------------------------	----------------------------------------------------------------------------------------------------------------------------------------------------------------------------------------

1. Verify that the computer's designated USB 2.0 port is enabled. To do so, right-click the **My Computer** icon and select **Properties > Hardware > Device Manager**. The Device Manager window displays a list of operational devices installed on your computer. Access the "**Universal Serial Bus Controller**" item heading to check the operational USB ports.

If the Universal Serial Bus controllers (USB) are not listed, reboot your computer, enter the CMOS setup (BIOS), and enable the USB port(s). Refer to your computer's documentation for instructions.

2. Connect the antenna feed (coaxial cable) to the unit's RF-In connector and to the antenna.
3. Connect the flat end of the USB-2 cable to the designated USB 2.0 port on the PC.

4. Connect the square end of the USB-2 cable to the corresponding connector on the unit. The yellow LED indicator lights up as the unit starts to function. Windows detects a new hardware device and launches the *Found New Hardware* wizard. Follow the instructions in the next section to install the tuner's drivers.

4. Installing the Hardware Drivers



Note: Remove all previous versions of the *Cat's Eye* USB 3560 drivers existing in your computer before installing the current ones. Refer to Section 7, *Troubleshooting*, for instructions on removal of the drivers.

The *Cat's Eye* USB 3560 drivers can be installed either from the Installation CD-ROM included in the kit or from VBox's FTP site (www.vboxcomm.com). Installation from the FTP site requires prior downloading of the updated driver package onto your hard disk. Make sure to follow the instructions corresponding to your chosen driver source.

1. Upon connecting the unit to the USB 2.0 port in your computer, Windows detects a new hardware and activates the *Found New Hardware* wizard. The following window displays. Select the "**No, not this time**" option. Click **Next** to proceed with the installation of the BDA driver loader. Figure 3 displays on screen.



Figure 1: Found New Hardware Wizard

2. If you wish to use the Installation CD-ROM as the source for the drivers, insert it into the computer's CD-ROM drive. The CD-ROM's *Opening Menu* shows on screen. Click **Minimize** to return to Windows' installation wizard.

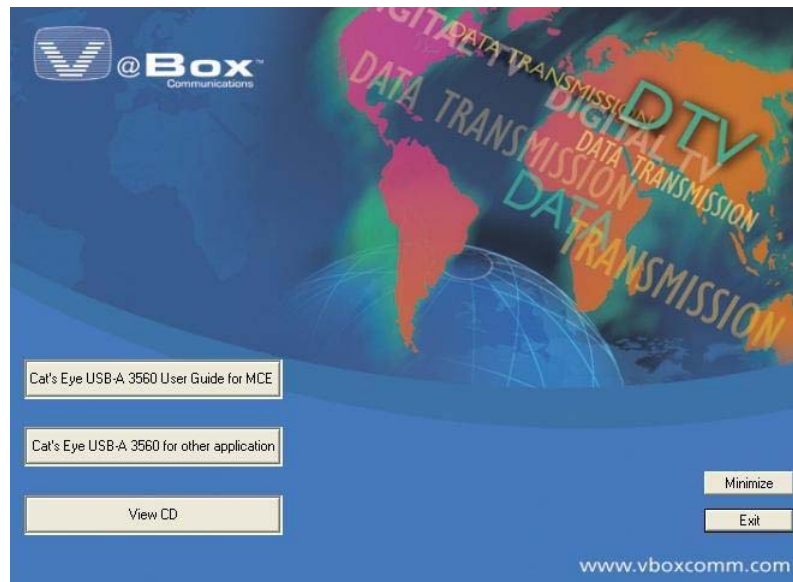


Figure 2: Installation CD-ROM's Opening Menu

3. Select "**Install from a list or specific location (Advanced)**" and click **Next**. The *Search and Install Options* window appears.

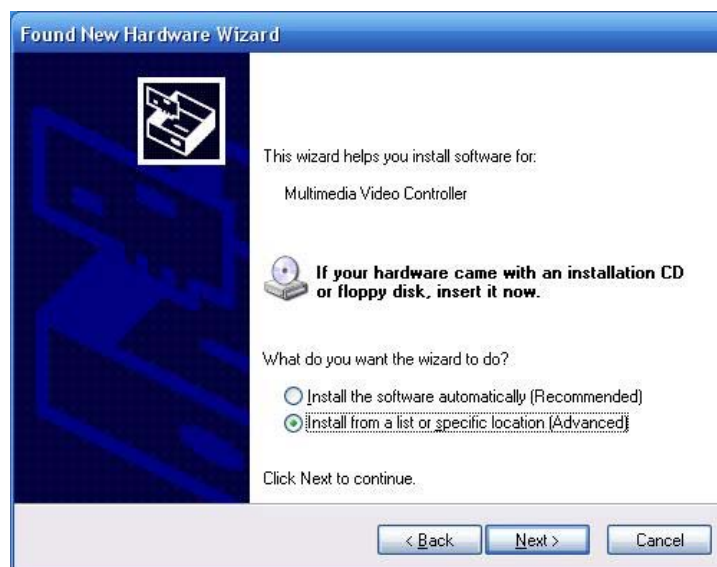


Figure 3: Installation Mode Options for BDA Driver Loader

4. a. **Installing the BDA driver loader from the CD-ROM:** select the “**Search for the best driver in these locations**” and the “**Search removable media (floppy, CD-ROM...)**” options. Click **Next**. The wizard looks for the corresponding files in the Installation CD-ROM and proceeds to install the driver loader.

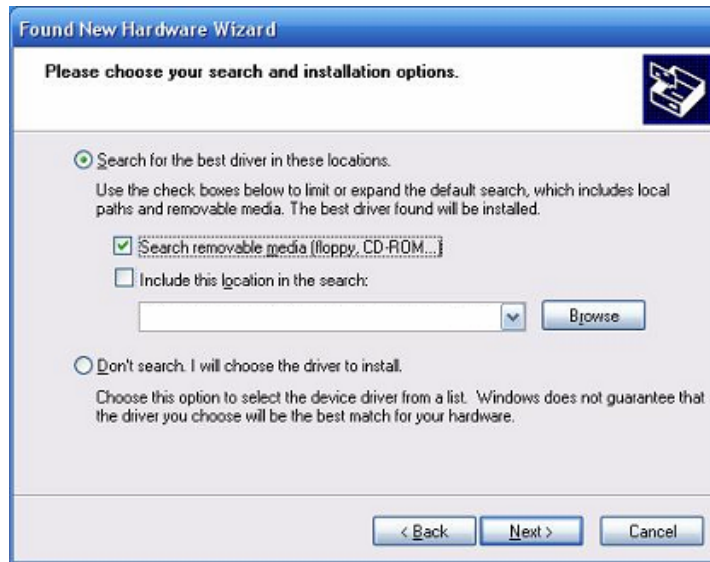


Figure 4: Search and Install Options – Installation from CD-ROM

- b. **Installing the BDA driver loader from the FTP Site:** this mode requires previous downloading of the updated drivers from the FTP source onto a designated location in your computer. To install the BDA driver loader from the downloaded package, select the “**Search for the best driver in these locations**” option. Check the “**Include this location in the search:**” box and click **Browse**. Select the path to the updated driver in the directory displayed in the drop-down list field (the path in Figure 5 below is for illustration purposes only). Click **Next** to continue. The wizard proceeds to install the driver loader from the selected location.



Figure 5: Search and Install Options – Installation from Downloaded Package

5. Click **Finish** in the following screen to complete the installation of the BDA driver loader. The wizard prepares for the installation of the BDA Tuner driver.



Figure 6: Completing the Installation of the BDA Driver Loader

6. The *Found New Hardware* window (Figure 1) displays again. Select the “**No, not this time**” option. Click **Next** to proceed with the installation of the BDA driver. The wizard asks you for instructions regarding the desired mode of installation.
7. Select “**Install the software automatically (Recommended)**” and click **Next**. The wizard proceeds to install the appropriate drivers.



Figure 7: Installation Mode Instructions for BDA Driver

8. When installation of the BDA driver is completed, the following window appears. Click **Finish**. The wizard prepares the installation of the BDA Tuner.



Figure 8: Completing the Installation of the BDA Driver

9. Figure 1 displays again. Select the “**No, not this time**” option. Click **Next** to proceed with the installation of the BDA Tuner driver. The wizard asks you for the desired mode of installation.
10. Select “**Install the software automatically (Recommended)**” and click **Next**. The wizard proceeds to install the appropriate drivers.



Figure 9: Installation Mode Instructions for BDA Tuner

11. Upon finishing the installation of the BDA Tuner driver, the following window appears. Click **Finish**. This completes the installation of the drivers for the *Cat's Eye* USB 3560 HDTV Tuner. Proceed to configure the MCE system to work with this device.

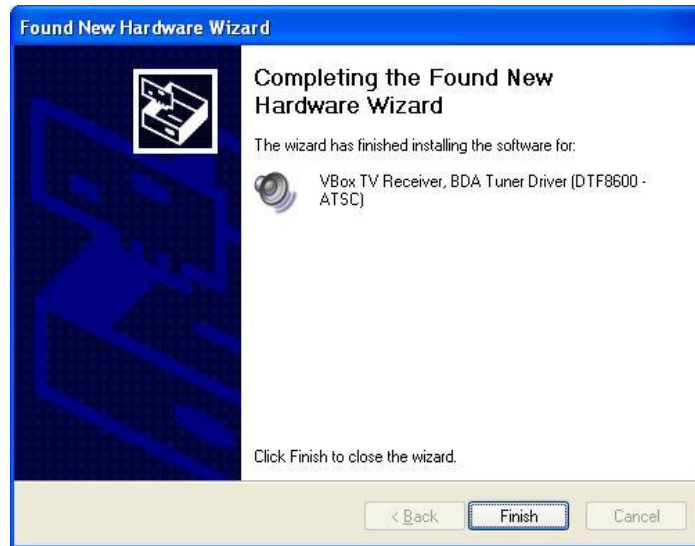


Figure 10: Completing the Installation of the BDA Tuner Driver

5. Installing the Microsoft Rollup 1 Update Package

Microsoft has made available a software update that enhances the use of Windows XP MCE's capabilities with ATSC broadcasted streams and data. Among other things, it provides HDTV support for computers operating ATSC tuner, such as *Cat's Eye* USB 3560. Follow the procedure below to install this update on your computer.

1. Connect via Internet to the Microsoft Update Website and download the "Update Rollup 1 for Windows XP Media Center Edition 2005 with HDTV Support (KB873369)".
2. Run the downloaded file (current at 10/15/2004, "windowsxpmediacenter2005-kb873369-enu.exe"). The initial window of the update's *Setup Wizard* displays on the screen.



Figure 11: Initial Window of the Update's Setup Wizard

3. Proceed as per the recommendations in the *Setup Wizard's* opening window. Click **Next** to continue. The update's *License Agreement* window displays.

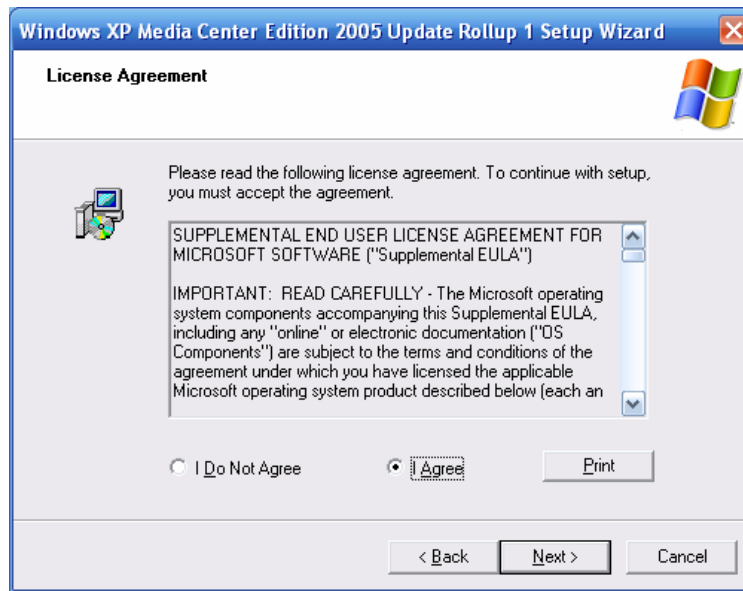


Figure 12: License Agreement for the Update

4. Read the agreement carefully. Select the "**I Agree**" option and click **Next**. Upon completion of installation, the following window displays.



Figure 13: Completing the Installation of the Update

5. Click **Finish** to conclude the installation of the update. The computer shuts down and reboots to implement the changes.

6. Configuring Windows XP MCE to Work with VBox's USB HDTV Tuner

To enjoy HDTV broadcasts properly, it is necessary to configure the operating system's parameters to work with the *Cat's Eye* USB 3560 Tuner. Follow the instructions below to configure the system and obtain the best possible results.

1. Invoke the MCE application. Select **Settings** at the *MCE Main Menu* and follow the procedure to set up the TV signal. MCE asks you to confirm your geographical region to select local television services.
2. The region displayed corresponds to the one set through the *Region Settings* menu in the *Control Panel*.
 - a. To confirm this region for local TV reception, select “**Yes, use this region to configure TV services**”. Click **Next** to continue. Follow the on-screen instructions until you are asked to chose a mode of configuration for the TV signal (Figure 16).



Figure 14: Region Setting Window

- b. To set another reception region, select **“No, I want to select a different region”** and Click **Next**. The *Region Selection* window displays, showing a list of countries. Scroll through the list and select the correct region. Click **Next**. Follow the on-screen instructions until you reach the *TV Signal Setup Mode* window (Figure 16).



Figure 15: Region Selection Window

3. The TV signal setup can be configured automatically or manually.
- a. **Automatic Configuration:** Select **“Configure my TV signal automatically (Recommended)”** and click **Next**. The system automatically detects the tuner as a terrestrial device and sets antenna as the type of signal to be used. The window in Figure 18 displays on the screen.



Figure 16: TV Signal Setup Mode Window

- b. **Manual Configuration:** Select “*I will manually configure my TV signal*” and click **Next**. The system asks you to define the standard TV signal you receive. Select “**Antenna**” and click **Next**. The system completes the TV signal configuration process. Figure 18 displays on the screen. You are advised that a change in signal source requires you to update the TV guide listings accordingly.



Figure 17: Completing TV Signal Setup

4. Select “**Set Up Guide listings**” to update the TV listings as per the new signal source and Click **Next**. Follow the on-screen instructions to configure the local program listings, to choose the local signal provider, and to configure over-the-air Digital TV reception.



Figure 18: TV Signal Setup Confirmation

5. Upon configuration of the settings for TV and DTV reception, refer to **Media Center Online Help** for instructions on watching the selected broadcasts and performing related operations.

7. Troubleshooting

The *Cat's Eye* USB 3560 HDTV Tuner is designed to work smoothly under most normal conditions. However, in the event that you experience some trouble with this device, proceed as follows:

7.1 Basic Troubleshooting

1. Check that the USB 2.0 and antenna connections are properly established at both ends.
2. Check the installation of the tuner's drivers:
 - a. Access the *Device Manager* window. Right-click the **My Computer** icon, and do either of the following:
 - Click "**Manage**". The *Computer Management* window shows. Select "**Device Manager**". The *Device Manager* window appears, displaying a list of all hardware devices installed on the computer. Or
 - Click "**Properties**". The *System Properties* window displays. Access the **Hardware** tab and click the **Device Manager** button. The *Device Manager* window displays.
 - b. Scroll through the Device Manager list until you reach the **Sound, Video and Game Controllers** menu. Click the + icon on its left to open it. Look for the "**VBox 3560 USB2 Receiver, BDA Driver**" and the "**VBox TV Receiver, BDA Tuner Driver (DTF8600-ATSC)**" items. In case there is a problem with any of the tuner's components, one of the following symbols displays besides the item:
 - A yellow question mark denotes a problem with the connection of the device to the computer, or with the operation of the drivers or their recognition by the operating system
 - A red "X" indicates a device failure or the operating system being ordered not to use the device.

In either case, it is recommended that you remove and re-install the drivers.

- c. To uninstall a driver, right-click the relevant item on the list and select "**Uninstall**". A dialog box asks you to confirm your request. Click **OK** to continue. The system removes the driver and displays the list of hardware devices without it. Repeat the process for the second driver.
- d. To renew operation of the *Cat's Eye* USB 3560 tuner, re-start your computer and install the hardware drivers again, as per the instructions in this document.

3. Check that your system complies with the minimum requirements for operating the *Cat's Eye* USB 3560 Tuner. To check your system configuration, proceed as follows:
 - a. Press **Start** and select "**Run**". The Run window appears
 - b. Type "DXDIAG" and click **OK**. A dialog box displays on screen, asking you to confirm whether you wish the program to check for WHQL digital signatures. Click **Yes**. The DirectX Diagnostic Tool window appears. The program starts checking your computer. A progress indicator on the lower left-hand section of the window lets you monitor the operation.

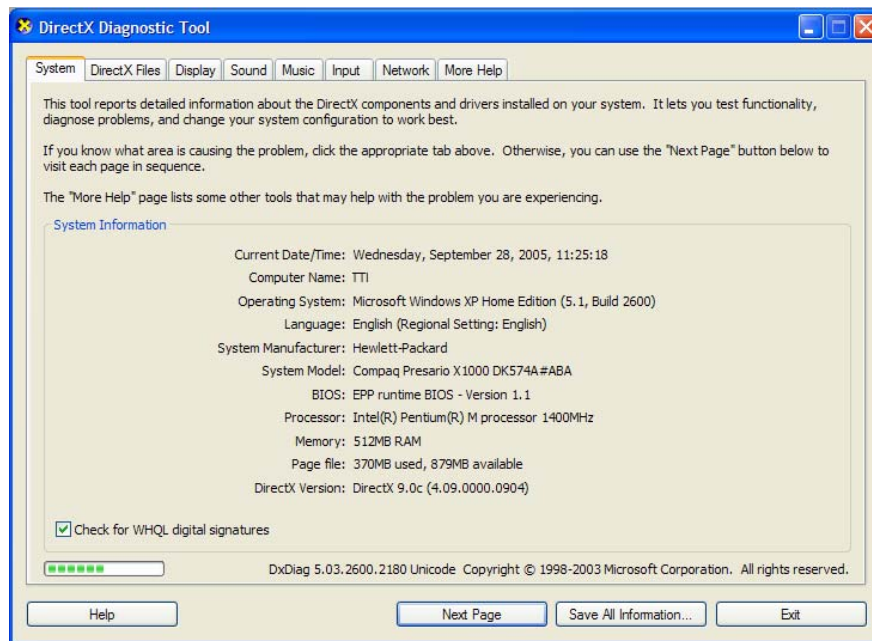


Figure 19: System Configuration Diagnostics

- c. At completion of the diagnostics operation, the progress indicator disappears. The DirectX Diagnostic Tool window shows your computer's system data. Press the **Save All Information** button to generate a text file with the information. A message indicates that the program is collecting information for saving.
- d. Upon finishing collecting information, the Save As window displays on the screen. Choose a known location in your computer to save the file and press **Save**. The Save As window disappears and you return to the DirectX Diagnostic Tool window. Press **Exit** to close this window.
- e. Check the file and verify that your computer fulfills all minimum requirement for the operation of the *Cat's Eye* USB 3560 HDTV tuner. In case you wish to consult with VBox Communications Ltd., please e-mail this file to the Support department together with your query.

7.2 Advanced Troubleshooting

Video film does not display smoothly (“jerking” image):

1. Make sure that you are using a USB-2 cable to connect the device to the computer.
2. Make sure that the device is connected to a USB 2.0 High Speed port in your computer. Verify that the CPU Chipset’s drivers correspond to this requirement.
3. Make sure that you are using a suitable graphics card, preferably the latest generation of nVidia® or ATI® products.
4. Update the drivers of the graphics card to the latest available at the manufacturer’s site
5. Perform a full-system virus and ad-ware/spyware scan and hard-disk defragmentation
6. Lower the resolution or color depth of your computer monitor via the *Settings* tab under **Control Panel** > **“Appearance and Themes”** > **“Display”**.
7. Adjust your screen refresh rate in **Control Panel** > **“Appearance and Themes”** > **“Display”** > *Settings* > **Advanced** > *Monitor*.
8. Use an nVidia® Ver. 2 MPEG 2 decoder or a more advance version of this product.

Signal quality is not satisfactory:

1. The *Cat’s Eye* USB 3560 device receives all its power input from the USB 2.0 High Speed port in your computer. It is possible that insufficient power supply causes unsatisfactory signal quality. To verify and correct this situation, proceed as follows:
 - a. Connect the *Cat’s Eye* USB 3560 device to another USB 2.0 High Speed port on your computer. Compare the signal quality received on each port. Leave the device connected to the port in which a better signal is produced.
 - b. If connecting the device to each of your USB 2.0 ports results in zero or poor signal quality and/or lack of video image, use a USB 2.0 Hub with an external power source to connect the device to the computer.
2. If, after verifying a correct power transfer to the device, the signal is too weak, use VBox’s SignalMeter utility (included in the Installation CD-ROM’s *Utilities* folder) to align the antenna according to the maximum signal strength measured.
3. If the signal is too strong, it is recommended for you to consider the following alternatives:
 - Use the VBox SignalMeter utility to align the antenna according to the maximum signal quality measured.
 - Use an attenuator between the antenna and the tuner.
 - Reduce the amplification, in case you use an antenna with regulated amplifier.

8. Contact Information

For issues related to the *Cat's Eye* USB 3560 HDTV Tuner and Windows MCE, please refer to the following contact information:

8.1 VBox Communications USA

Marketing

Phone: + 1 (877) 261-3442

Technical Support

Support: support@vboxcomm.com

Drivers: www.vboxcomm.com/vbox/USB2-3560_BDADrivers_2.1.705.7-XP_logo.zip

8.2 Microsoft Corporation

General

Site: www.microsoft.com

Technical Support

Site: www.support.microsoft.com